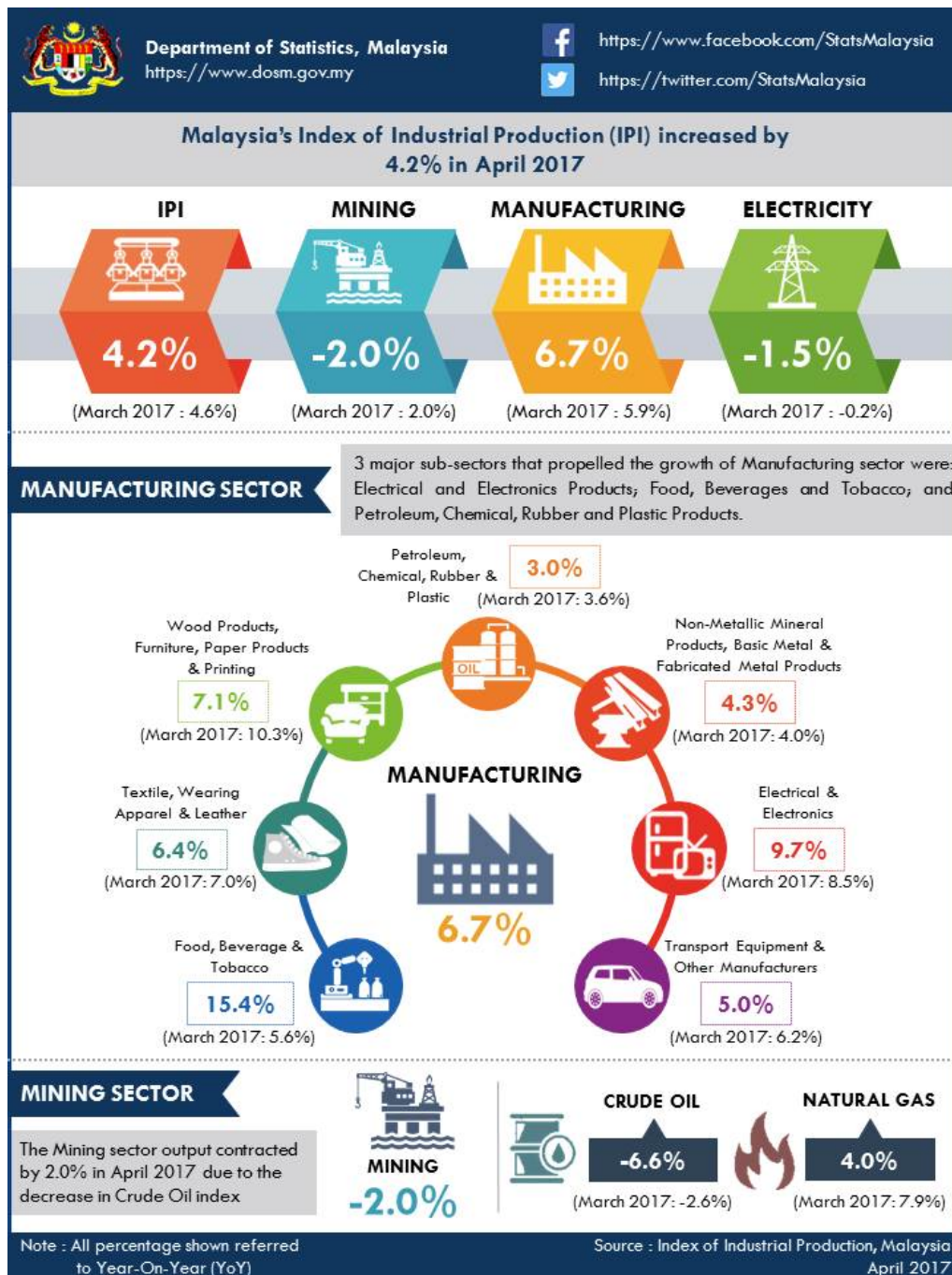




MINISTRY OF ECONOMY  
DEPARTMENT OF STATISTICS MALAYSIA

## INDEX OF INDUSTRIAL PRODUCTION, MALAYSIA APRIL 2017



### Malaysia's Index of Industrial Production (IPI) increased by 4.2% in April 2017

The Index of Industrial Production (IPI) increased by **4.2%** in April 2017 (March 2017 : 4.6%) as compared

to the same month of the previous year supported by the strong growth in Manufacturing sector by **6.7%**. However, the Mining and Electricity index declined by **2.0%** and **1.5%** respectively.

The Manufacturing sector output continued to record a significant growth of **6.7%** in April 2017 after an expansion of 5.9% recorded in March 2017. The major sub-sectors which expanded in April 2017 were: Electrical and Electronics Products (**9.7%**); Food, Beverages and Tobacco (**15.4%**); and Petroleum, Chemical, Rubber and Plastic Products (**3.0%**).

The Mining sector output contracted by **2.0%** in April 2017 (March 2017 : 2.0%) due to the **6.6%** decrease in Crude Oil index. Meanwhile, Natural Gas index rose **4.0%**.

The Electricity sector output declined by **1.5%** in April 2017 after a decreased of 0.2% recorded in March 2017

**\*Notes:**

Data for April 2017 is **provisional**. The data will be updated based on the latest available figures and subsequently published in the publication May 2017.

**Released By:**

**DR. MOHD UZIR MAHIDIN**  
**CHIEF STATISTICIAN MALAYSIA**  
**DEPARTMENT OF STATISTICS MALAYSIA**

**9 JUNE 2017**

**Contact person:**

Ho Mei Kei  
Public Relation Officer  
Corporate and User Services Division  
Department of Statistics, Malaysia  
**Tel** : +603-8885 7942  
**Fax** : +603-8888 9248  
**Email** : mkho[at]stats.gov.my

**Contact person:**

Baharudin Mohamad  
Public Relation Officer  
Strategic Communication and International Division  
Department of Statistics Malaysia  
**Tel** : +603-8090 4681  
**Fax** : +603-8888 9248  
**Email** : baharudin[at]dosm.gov.my

**Copyright ©2025 Department of Statistics Malaysia Official Portal. All Rights Reserved.**